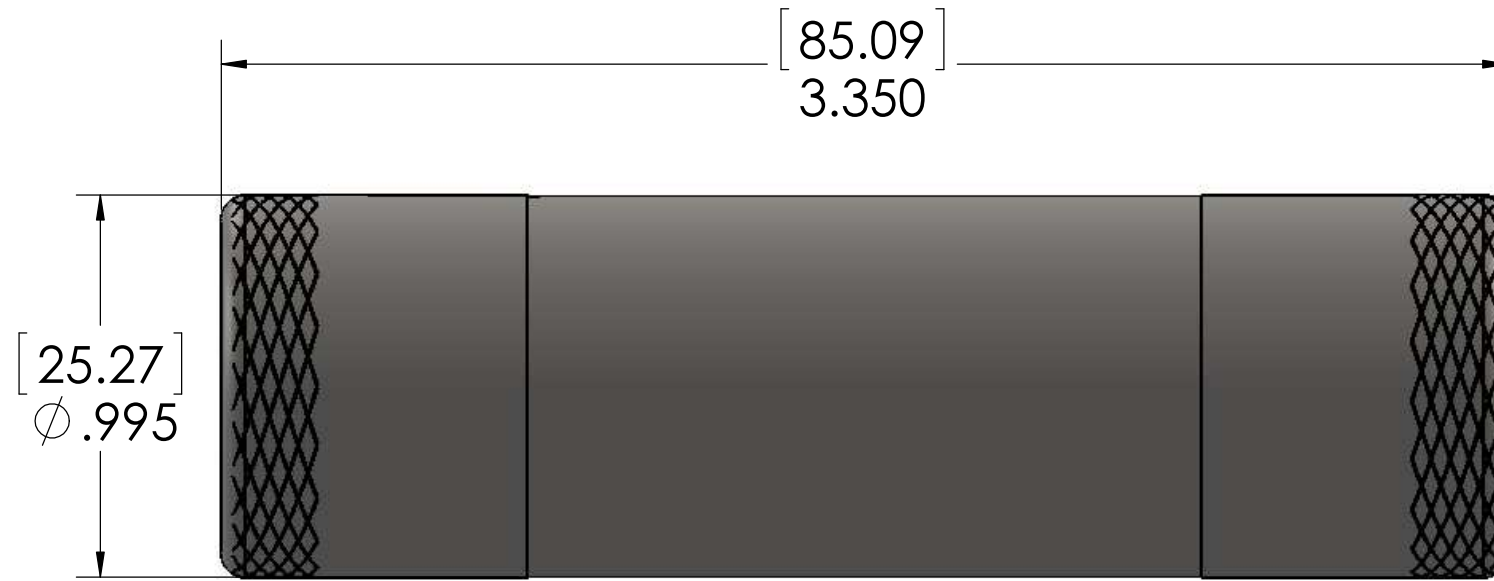
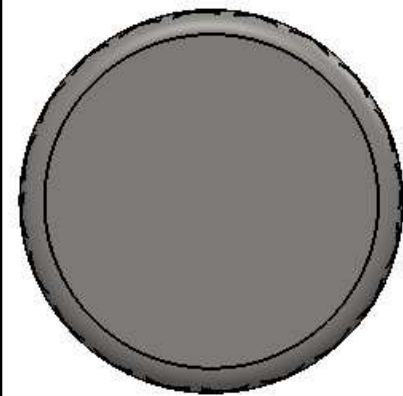
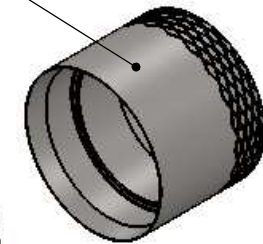


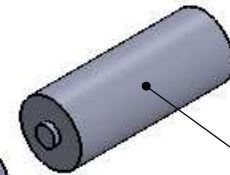
REV.	DESCRIPTION	DATE	APPROVED
A	RELEASE FOR PRODUCTION	10/6/2014	KRW



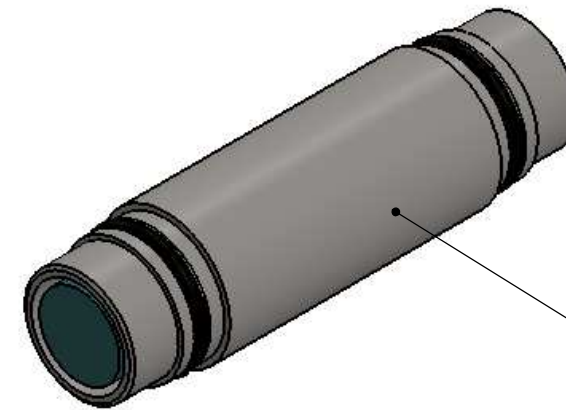
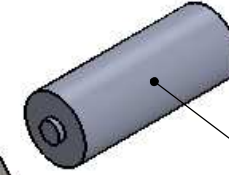
REMOVE STAINLESS STEEL CAP TO CHANGE BATTERIES



N-CELL BATTERY

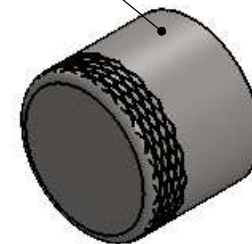


N-CELL BATTERY




X100-2N TRANSMITTER (STAINLESS STEEL HOUSING)

REMOVE STAINLESS STEEL CAP TO PROGRAM TRANSMITTER



NOTE:
 1. DIMENSIONS ARE IN INCHES AND [MILLIMETERS]
 2. MAXIMUM OPERATING PRESSURE: 2500PSI

PROPRIETARY AND CONFIDENTIAL
 THE INFORMATION CONTAINED IN THIS DRAWING IS THE SOLE PROPERTY OF CDI. ANY REPRODUCTION IN PART OR AS A WHOLE WITHOUT THE WRITTEN PERMISSION OF CDI IS PROHIBITED.

UNLESS OTHERWISE SPECIFIED:		NAME	DATE	 <p>TITLE: GENERAL ARRANGEMENT X100-2N TRANSMITTER</p>
DIMENSIONS ARE IN INCHES		DRAWN	DS	
TOLERANCES: FRACTIONAL ± 1/32 ANGULAR: ± 2° TWO PLACE DECIMAL ± .03 THREE PLACE DECIMAL ± .010		CHECKED		
INTERPRET GEOMETRIC TOLERANCING PER: ASME Y14.5M - 1994		ENG APPR.		
MATERIAL		MFG APPR.		
FINISH		Q.A.		
NEXT ASSY	USED ON	COMMENTS:		
APPLICATION	DO NOT SCALE DRAWING	ECN #:		
		SIZE	DWG. NO.	REV
		B	81-03-0061-00	A
		SCALE: 1:1	WEIGHT:	SHEET 1 OF 1