

# TRAXALL X300 Programmable Multi-frequency Transmitters

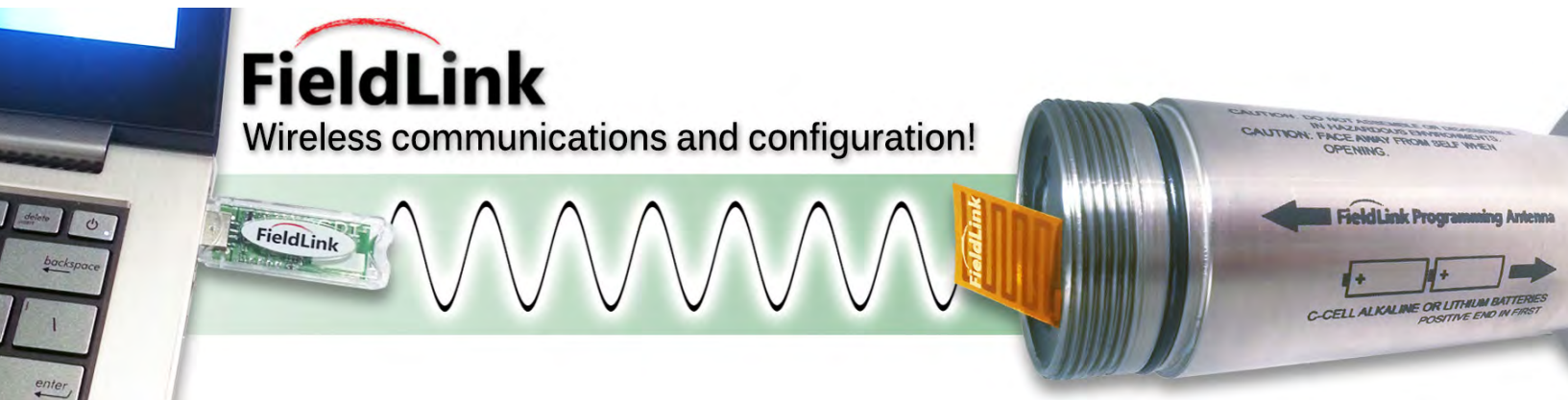


**CDI X300 TRANSMITTERS** are TRAXALL-compatible electromagnetic pipeline pig-tracking devices offering both programmable frequency and power control through CDI's proprietary FieldLink wireless communications system.

**Frequency Control** allows you to configure the transmitter to one of TRAXALL's seven colorized frequencies, or 22 Hz legacy frequency for backward compatibility with CDI's CD42 receiver or competitive receivers.

**Power Control** allows the operator to directly manage a trade-off between transmitter range vs. battery life. You can set output power to maximum for short runs/long range, or reduce output power for long runs/long battery life.

**FieldLink** is CDI's proprietary wireless communications network. Each X300 transmitter comes with a built-in radio frequency antenna. By connecting a supplied radio frequency USB key, any Windows PC or laptop can be used to configure a transmitter.



# TRAXALL X300 Programmable Multi-frequency Transmitters

**X300-2C** For pipelines 6 – 24 in. [152 – 610 mm]  
 Batteries: C-Cell (2) Alkaline or Lithium  
 Dimensions: 5.77 x 1.74 in. [146.43 x 44.2 mm]



**X300-3C** For pipelines: for 8 – 28 in. [203 – 711 mm]  
 Batteries: C-Cell (3) Alkaline or Lithium  
 Dimensions: 7.74 x 1.74 in. [196.6 x 44.2 mm]



**X300-4C** For pipelines 12 in. [305 mm] and larger  
 Batteries: C-Cell (4) Alkaline or Lithium  
 Dimensions: 9.61 x 1.74 in. [244.04 x 44.2 mm]



**X300-5C** For pipelines 14 in. [356 mm] and larger  
 Batteries: C-Cell (5) Alkaline or Lithium  
 Dimensions: 11.54 x 1.74 in. [293.24 x 44.2 mm]



| Battery Life/Range | Alkaline                | Lithium          |
|--------------------|-------------------------|------------------|
| Maximum Range      | Range: 50.0 ft [15.2 m] | 67 ft [20.4 m]   |
|                    | Constant: 299 hrs       | 248 hrs          |
|                    | Pulsing: 1,230 hrs      | 744 hrs          |
| Optimal Power      | Range: 32.5 ft [9.9 m]  | 41.4 ft [12.6 m] |
|                    | Constant: 466 hrs       | 315 hrs          |
|                    | Pulsing: 1,400 hrs      | 947 hrs          |
| Maximum Life       | Range: 20.1 ft [6.1 m]  | 21 ft [6.4 m]    |
|                    | Constant: 1,134 hrs     | 1,014 hrs        |
|                    | Pulsing: 28,748 hrs     | 25,694 hrs       |

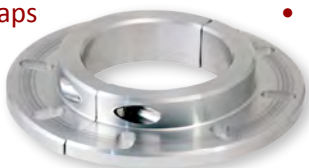
| Battery Life/Range | Alkaline                | Lithium          |
|--------------------|-------------------------|------------------|
| Maximum Range      | Range: 62.8 ft [19.1 m] | 75 ft [22.9 m]   |
|                    | Constant: 102 hrs       | 48 hrs           |
|                    | Pulsing: 306 hrs        | 146 hrs          |
| Optimal Power      | Range: 51.6 ft [15.7 m] | 60.8 ft [18.5 m] |
|                    | Constant: 196 hrs       | 128 hrs          |
|                    | Pulsing: 588 hrs        | 385 hrs          |
| Maximum Life       | Range: 30.0 ft [9.1 m]  | 38 ft [11.6 m]   |
|                    | Constant: 969 hrs       | 732 hrs          |
|                    | Pulsing: 24,568 hrs     | 18,564 hrs       |

| Battery Life/Range | Alkaline                | Lithium          |
|--------------------|-------------------------|------------------|
| Maximum Range      | Range: 67 ft [20.4 m]   | 76 ft [23.2 m]   |
|                    | Constant: 232 hrs       | 118 hrs          |
|                    | Pulsing: 696 hrs        | 352 hrs          |
| Optimal Power      | Range: 60.0 ft [18.3 m] | 72.7 ft [22.2 m] |
|                    | Constant: 266 hrs       | 187 hrs          |
|                    | Pulsing: 798 hrs        | 561 hrs          |
| Maximum Life       | Range: 50.0 ft [15.2 m] | 74.1 ft [22.6 m] |
|                    | Constant: 1,055 hrs     | 847 hrs          |
|                    | Pulsing: 34,596 hrs     | 21,471 hrs       |

| Battery Life/Range | Alkaline                | Lithium          |
|--------------------|-------------------------|------------------|
| Maximum Range      | Range: 73.7 ft [22.5 m] | 90.9 ft [27.7 m] |
|                    | Constant: 277 hrs       | 132 hrs          |
|                    | Pulsing: 832 hrs        | 398 hrs          |
| Optimal Power      | Range: 68.4 ft [20.8 m] | 80.4 ft [24.5 m] |
|                    | Constant: 312 hrs       | 220 hrs          |
|                    | Pulsing: 937 hrs        | 660 hrs          |
| Maximum Life       | Range: 36.3 ft [11 m]   | 51.1 ft [15.6 m] |
|                    | Constant: 1,000 hrs     | 877 hrs          |
|                    | Pulsing: 35,098 hrs     | 26,293 hrs       |

## Standard Features

- Programmable frequency
- Pulse or continuous transmission
- Available for rent or purchase
- Flange kit for external mount
- Knurled & threaded caps
- One-year warranty
- Spare O-rings



X400 Flange Kit

## Specifications

- Pipeline sizes: 12 in. [305 mm] and larger
- Power: alkaline 1.5 V type D-cell batteries
- Operating Temp: -40°F to 140°F [-40°C to 60°C]
- Operating Pressure: 2,500 psi [172 bar]\*
- Material: 304L Stainless Steel



*The TRAXALL family of transmitters is covered under United States Patent No. 9172406*

*\*7,500 psi [516 bar] (Optional Titanium Construction)*