

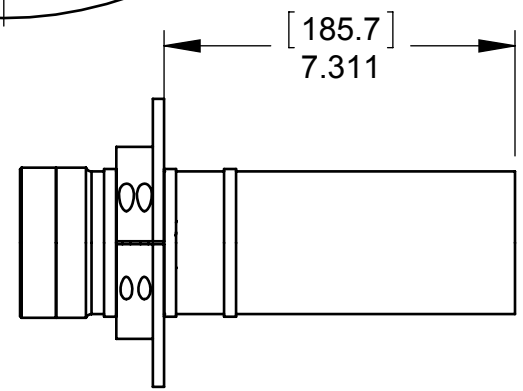
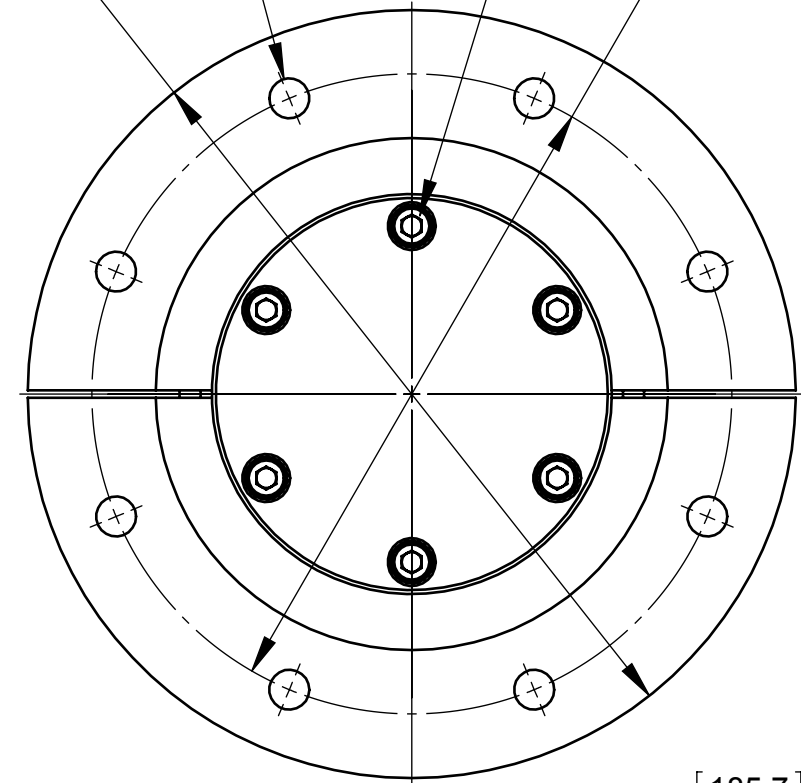
REVISIONS			
REV.	DESCRIPTION	DATE	APPROVED
A	RELEASED	3/30/2012	DS

[7.9]  
(8X)  $\phi$ .313

[152.4]  
 $\phi$ 6.000

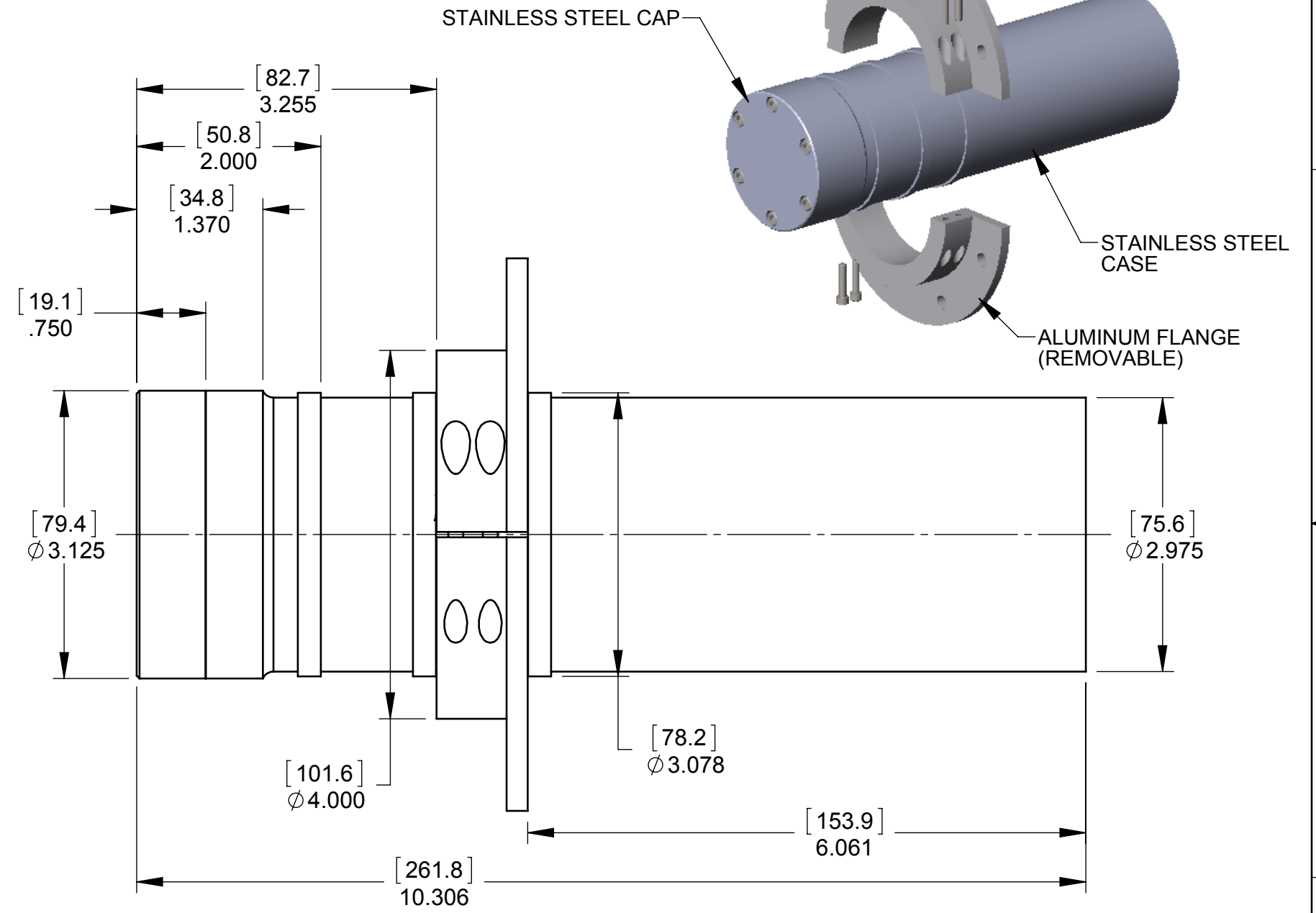
[127]  
 $\phi$ 5.000

CAP MOUNTING SCREW -  
SEE NOTE 4



**VIEW SHOWING FLANGE IN POSITION 2**

- NOTES:  
 1. DIMENSIONS ARE IN INCHES AND [MILLIMETERS].  
 2. MAXIMUM OPERATING PRESSURE: 10,000 PSI (689 BAR).  
 3. FLANGE HAS 2 POSITIONS OR CAN BE REMOVED.  
 4. TORQUE CAP SCREWS TO 45 IN-LBS BEFORE USING TRANSMITTER.



**VIEW SHOWING FLANGE IN POSITION 1**

**PROPRIETARY AND CONFIDENTIAL**  
 THE INFORMATION CONTAINED IN THIS DRAWING IS THE SOLE PROPERTY OF CDI. ANY REPRODUCTION IN PART OR AS A WHOLE WITHOUT THE WRITTEN PERMISSION OF CDI IS PROHIBITED.

UNLESS OTHERWISE SPECIFIED:		NAME	DATE	
DIMENSIONS ARE IN INCHES TOLERANCES: FRACTIONAL $\pm$ 1/32 ANGULAR: $\pm$ 2° TWO PLACE DECIMAL $\pm$ .03 THREE PLACE DECIMAL $\pm$ .010		DRAWN	DS	
INTERPRET GEOMETRIC TOLERANCING PER: ASME Y14.5M - 1994		CHECKED		TITLE: <b>GENERAL ARRANGEMENT, CD42-T1AVHP</b>
MATERIAL		ENG APPR.		
FINISH		MFG APPR.		SIZE DWG. NO. REV
NEXT ASSY	USED ON	Q.A.		<b>B 81-03-0055-00E A</b>
APPLICATION		COMMENTS:		SCALE: WEIGHT: SHEET 1 OF 1
DO NOT SCALE DRAWING				