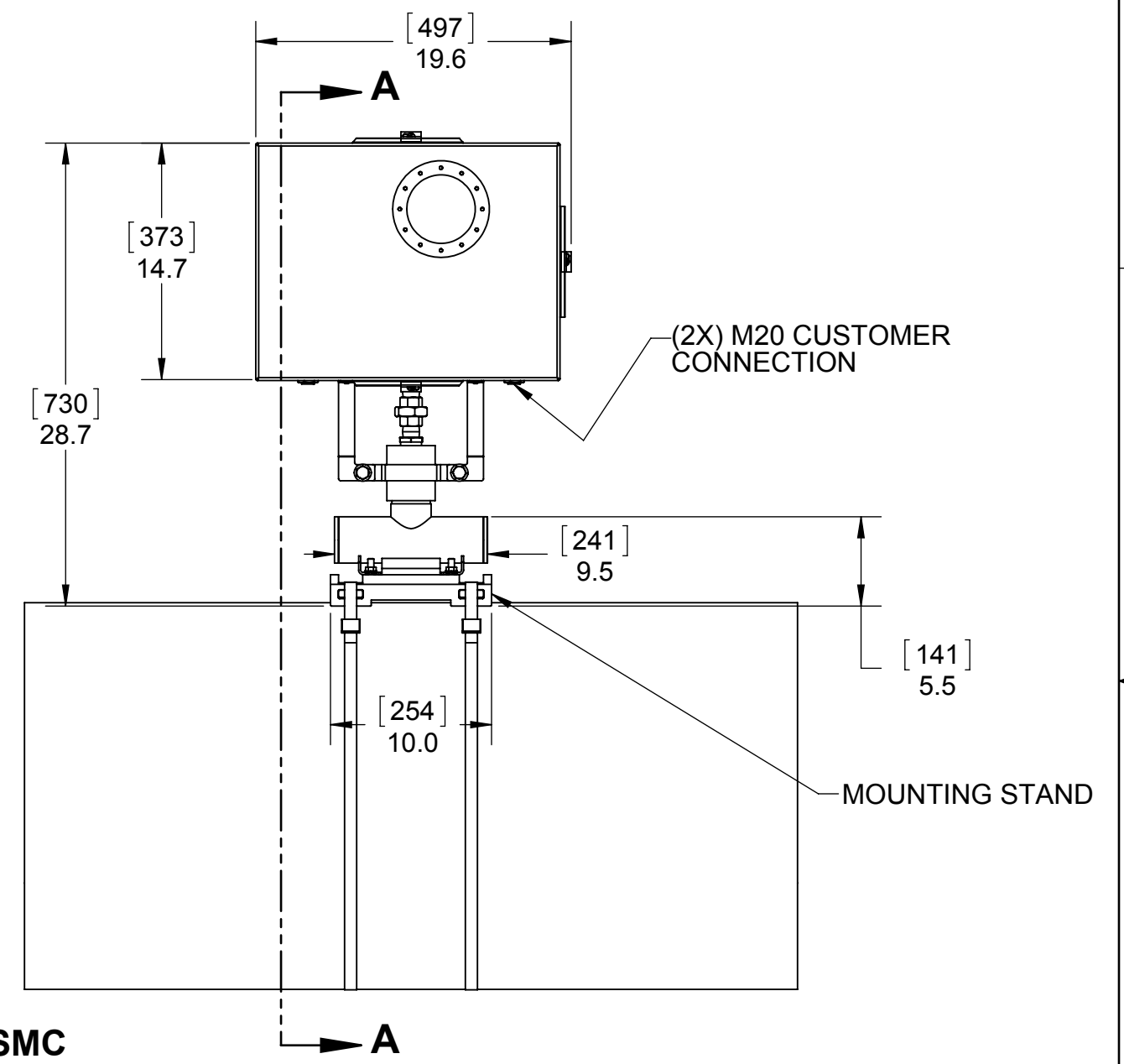
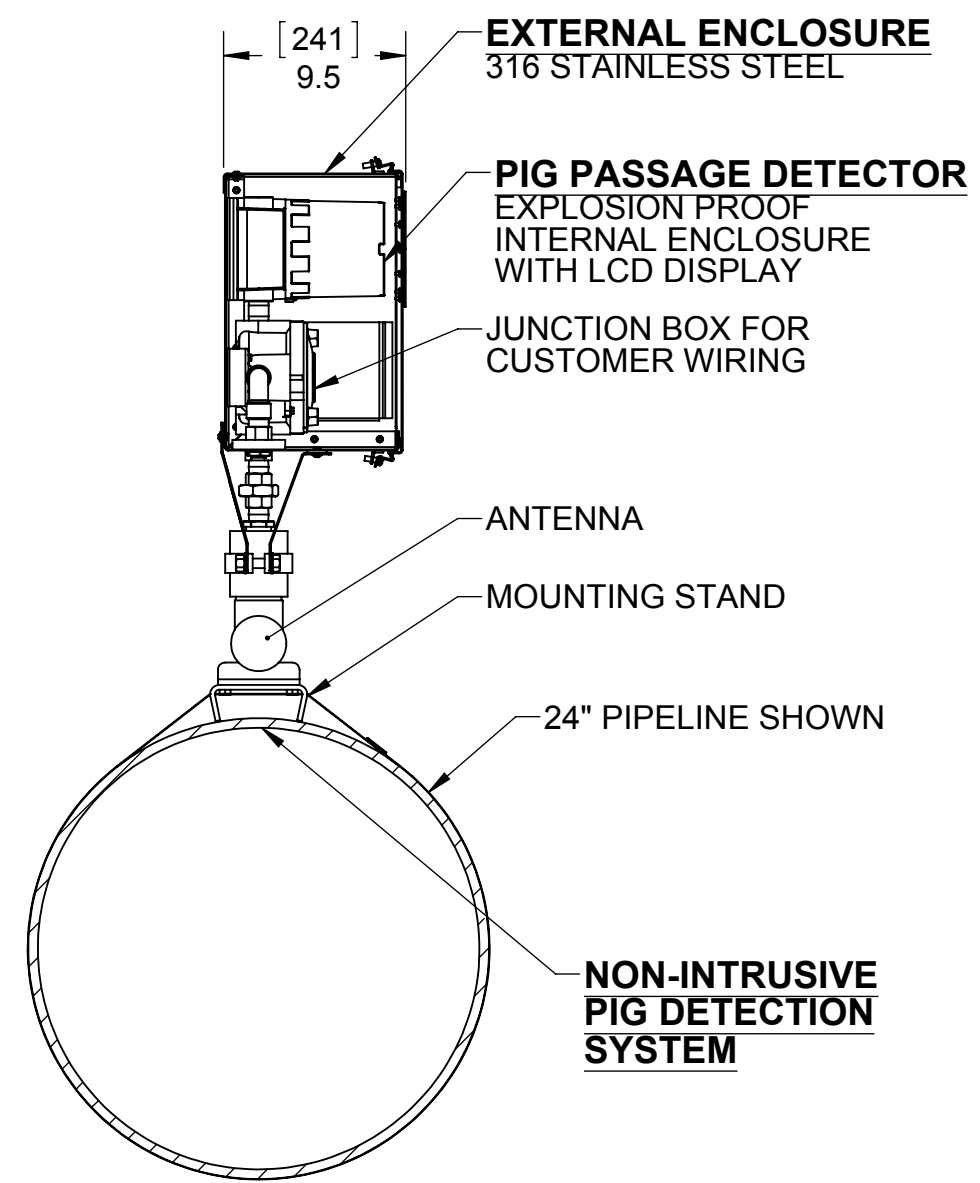
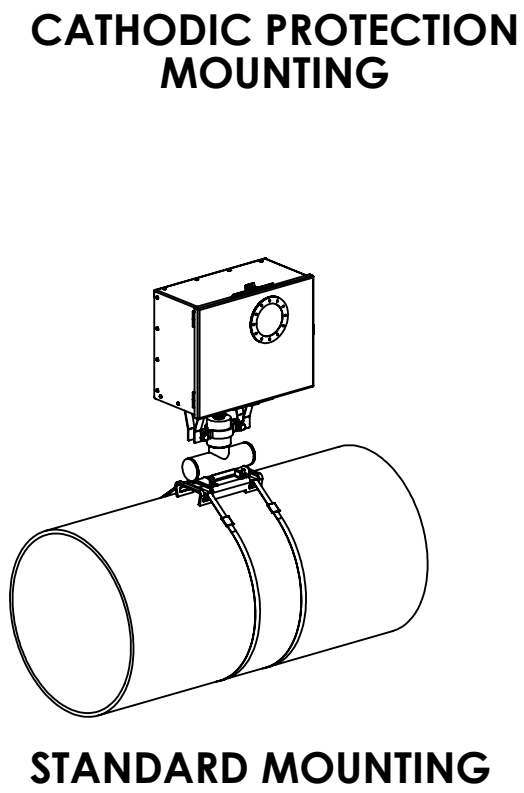
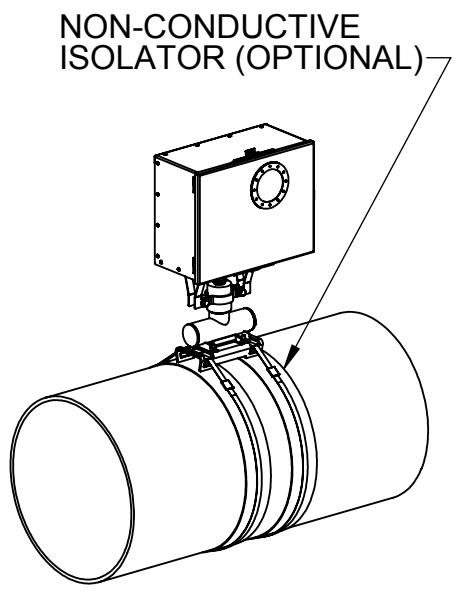


REVISIONS			
REV.	DESCRIPTION	DATE	APPROVED
E	UPDATED FOR ENCLOSURE & ANTENNA REDESIGN	03-21-2012	DS



**MODEL CD52-12-316SSMC  
ABOVE GROUND  
PIG SIGNALLERS  
SHOWN**

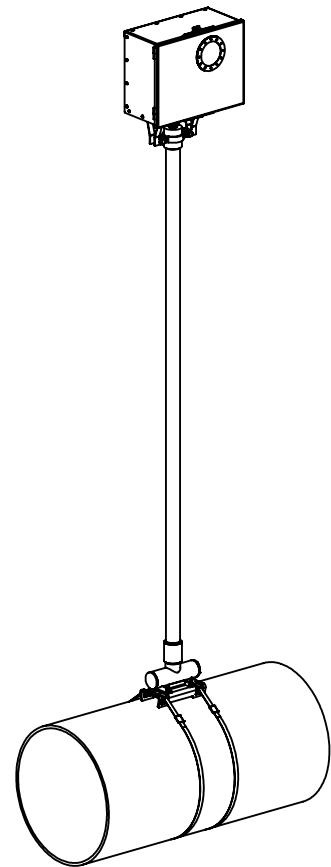
- NOTES:
1. MATERIAL: ALL OUTSIDE OF EXTERNAL ENCLOSURE - 316 STAINLESS STEEL.
  2. ALL COMPONENTS INSIDE OF EXTERNAL AND OUTSIDE OF INTERNAL ENCLOSURE ARE ATEX CERTIFIED.
  3. DIMENSIONS ARE IN INCHES AND [MILLIMETERS].
  4. WEIGHT OF MODEL CD52-12-316LSSMC WITHOUT MOUNTING COMPONENTS: 61 lbs [27.7 kg].
  5. MAXIMUM AIR FREIGHT CRATE DIMENSIONS: 150" X 48" X 62" [3810 X 1219 X 1575].
  6. HEIGHT OPTIONS SHOWN ON SHEET 2.

**PROPRIETARY AND CONFIDENTIAL**  
THE INFORMATION CONTAINED IN THIS DRAWING IS THE SOLE PROPERTY OF CDI. ANY REPRODUCTION IN PART OR AS A WHOLE WITHOUT THE WRITTEN PERMISSION OF CDI IS PROHIBITED.

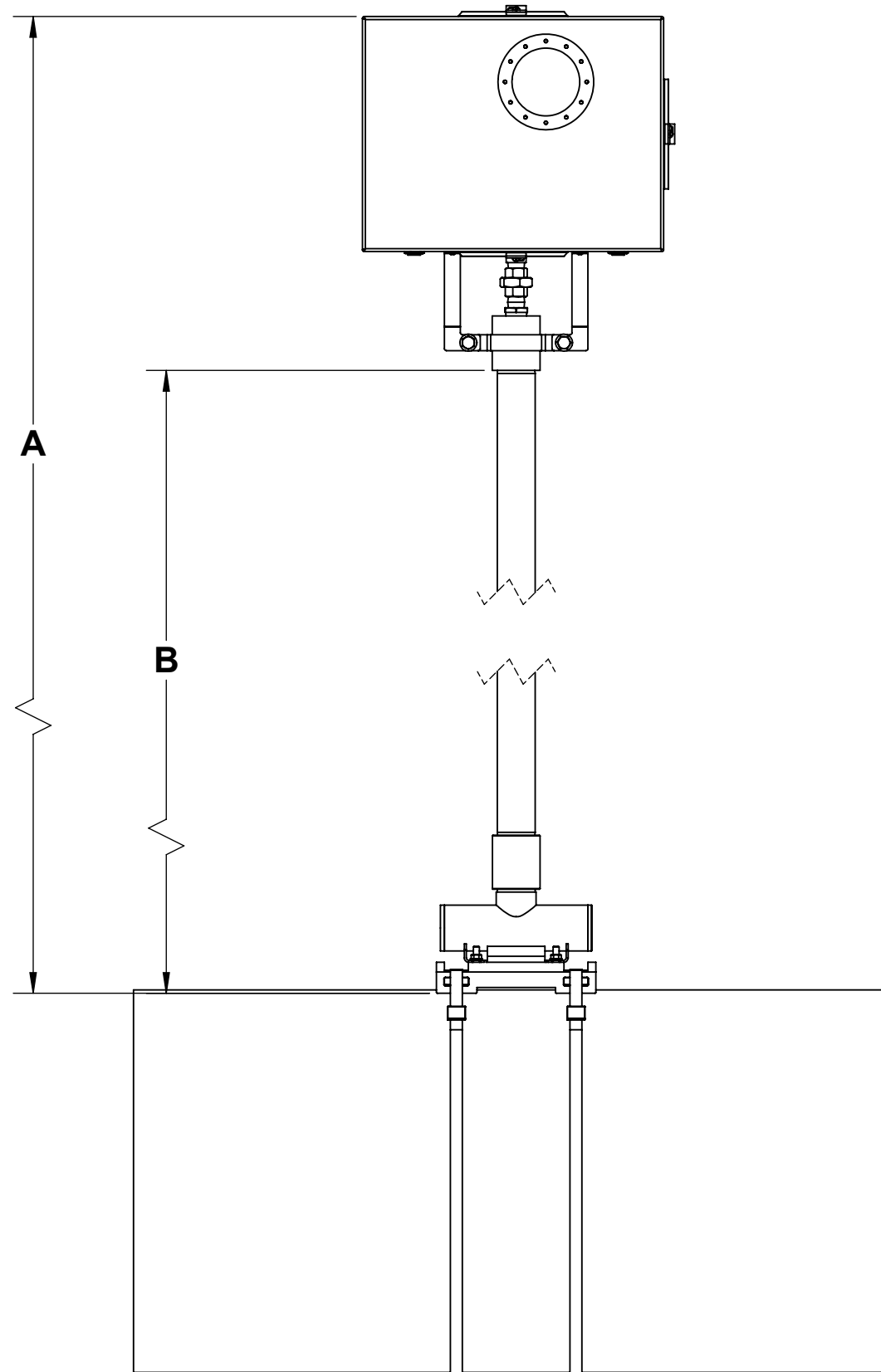
UNLESS OTHERWISE SPECIFIED:		NAME	DATE	<p><b>CDI</b></p> <p>TITLE: <b>GENERAL ARRANGEMENT, CD52-XX-316SSMC</b></p>
DIMENSIONS ARE IN INCHES		DRAWN	DS	
TOLERANCES: FRACTIONAL ± 1/32		CHECKED		
ANGULAR: ± 2°		ENG APPR.		
TWO PLACE DECIMAL ± .03 THREE PLACE DECIMAL ± .010		MFG APPR.		
INTERPRET GEOMETRIC TOLERANCING PER: ASME Y14.5M - 1994		Q.A.		<p>SIZE DWG. NO. REV</p> <p><b>B 81-05-0063-00E E</b></p>
MATERIAL		COMMENTS:		
NEXT ASSY	USED ON	ECN #:		SCALE: WEIGHT: SEE NOTE 4 SHEET 1 OF 2
APPLICATION		DO NOT SCALE DRAWING		

CD52-XX-316SSMC STANDARD HEIGHT OPTIONS			
MODEL	'A' DIM	'B' DIM	WEIGHT
CD52-36-316SSMC	36" [914 mm]	14" [356 mm]	65 lb [29.4 kg]
CD52-48-316SSMC	48" [1219 mm]	26" [660 mm]	68 lb [31.3 kg]
CD52-60-316SSMC	60" [1524 mm]	38" [965 mm]	72 lb [32.7 kg]
CD52-72-316SSMC	72" [1829 mm]	50" [1270 mm]	76 lb [34.5 kg]
CD52-84-316SSMC	84" [2134 mm]	62" [1575 mm]	79 lb [35.8 kg]
CD52-96-316SSMC	96" [2438 mm]	74" [1880 mm]	83 lb [37.6 kg]
CD52-108-316SSMC	108" [2743 mm]	86" [2184 mm]	86 lb [39.0 kg]
CD52-120-316SSMC	120" [3048 mm]	98" [2489 mm]	90 lb [40.8 kg]
CD52-132-316SSMC	132" [3353 mm]	110" [2794 mm]	93 lb [42.2 kg]
CD52-144-316SSMC	144" [3658 mm]	122" [3099 mm]	97 lb [44.0 kg]
CD52-156-316SSMC	156" [3962 mm]	134" [3404 mm]	100 lb [45.4 kg]
CD52-168-316SSMC	168" [4267 mm]	146" [3708 mm]	104 lb [47.2 kg]
CD52-180-316SSMC	180" [4572 mm]	158" [4013 mm]	107 lb [48.5 kg]

CUSTOM HEIGHTS ALSO AVAILABLE.



**ISOMETRIC VIEW  
CD52-120-316SSMC  
SHOWN**



TITLE: <b>GENERAL ARRANGEMENT, CD52-XX-316SSMC</b>		
SIZE <b>B</b>	DWG. NO. <b>81-05-0063E</b>	REV <b>E</b>
SCALE:	WEIGHT: SEE TABLE	SHEET 2 OF 2