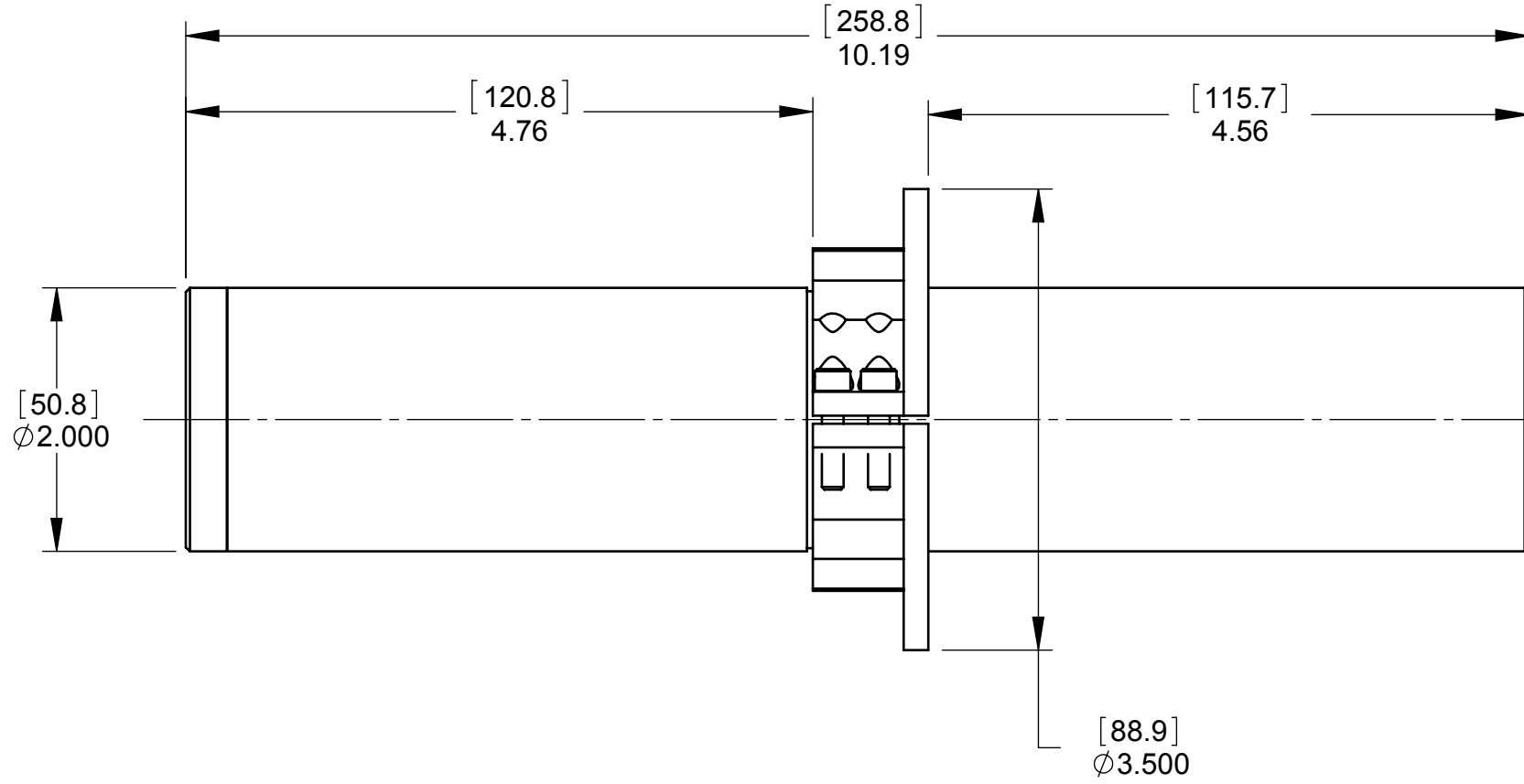


8X ϕ .281 [7.1] THRU

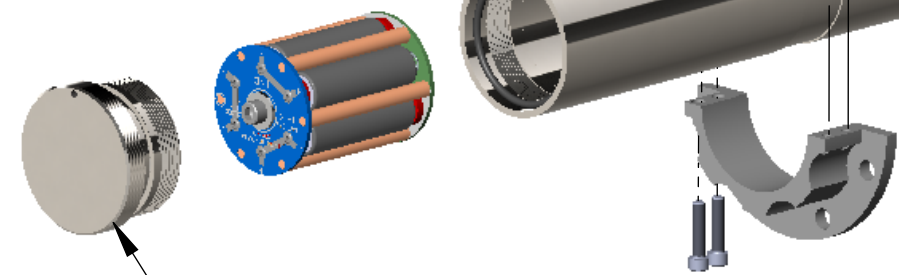
[76]
 ϕ 2.992



MOUNTING FLANGE, REMOVABLE (ALUMINUM)

FLANGE SCREW (STAINLESS STEEL)

T1A TRANSMITTER (STAINLESS STEEL HOUSING)



REMOVE STAINLESS STEEL CAP TO CHANGE BATTERIES OR PULSE PATTERN.

- NOTES:
 1. DIMENSIONS ARE IN INCHES AND [MILLIMETERS].
 2. MAXIMUM OPERATING PRESSURE: 2500 PSI (172 BAR).
 3. APPROXIMATE WEIGHT: 5.5 LB (2.5 KG).

PROPRIETARY AND CONFIDENTIAL
 THE INFORMATION CONTAINED IN THIS DRAWING IS THE SOLE PROPERTY OF CDI. ANY REPRODUCTION IN PART OR AS A WHOLE WITHOUT THE WRITTEN PERMISSION OF CDI IS PROHIBITED.

		UNLESS OTHERWISE SPECIFIED:		NAME	DATE
		DIMENSIONS ARE IN INCHES TOLERANCES: FRACTIONAL \pm 1/32 ANGULAR: \pm 2° TWO PLACE DECIMAL \pm .03 THREE PLACE DECIMAL \pm .010		DRAWN	DS 8/31/2009
		INTERPRET GEOMETRIC TOLERANCING PER: ASME Y14.5M - 1994		CHECKED	
		MATERIAL		ENG APPR.	
		FINISH		MFG APPR.	
NEXT ASSY	USED ON			Q.A.	
APPLICATION		DO NOT SCALE DRAWING		COMMENTS:	
		ECN #:		TITLE: ASSEMBLY, CD42-T1A TRANSMITTER	
		SIZE	DWG. NO.	REV	
		B	81-03-0012-00E	D	
		SCALE:	WEIGHT:	SHEET 1 OF 1	