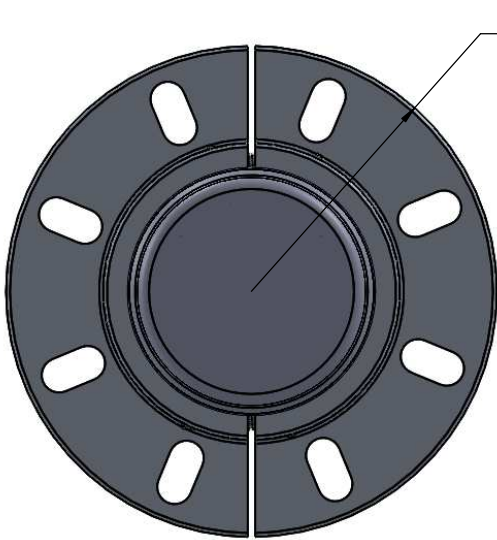


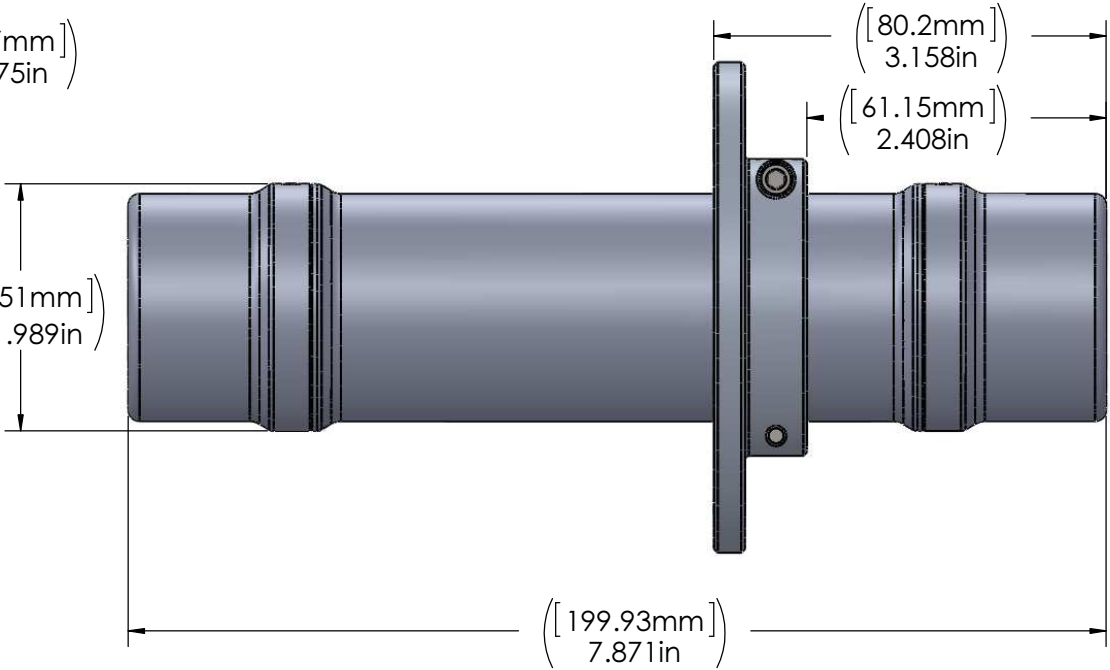
8 7 6 5 4 3 2 1

REV.	DESCRIPTION	DATE	APPROVED
A	RELEASE FOR PRODUCTION	10/18/2014	KRW



([50.17mm]
R1.975in)

([50.51mm]
Ø1.989in)




D
C
B
A

D
C
B
A



8 7 6 5 4 3 2 1

PROPRIETARY AND CONFIDENTIAL
THE INFORMATION CONTAINED IN THIS DRAWING IS THE SOLE PROPERTY OF CDI. ANY REPRODUCTION IN PART OR AS A WHOLE WITHOUT THE WRITTEN PERMISSION OF CDI IS PROHIBITED.

		UNLESS OTHERWISE SPECIFIED: DIMENSIONS ARE IN INCHES TOLERANCES: FRACTIONAL ± 1/32 ANGULAR: ± 2° TWO PLACE DECIMAL ± .03 THREE PLACE DECIMAL ± .010	NAME	DATE		
		INTERPRET GEOMETRIC TOLERANCING PER: ASME Y14.5M - 1994	DRAWN	KRW		10/16/2014
		MATERIAL	CHECKED			
		FINISH	ENG APPR.			
		125RMS MIN	MFG APPR.			
NEXT ASSY	USED ON		Q.A.			
APPLICATION		DO NOT SCALE DRAWING	COMMENTS:			
			ECN #:			

TITLE: **X300-3C ATEX GENERAL ASSEMBLY**

SIZE **B** DWG. NO. **81-03-0077-00GA** REV **A**

SCALE: 1:2 WEIGHT: SHEET 1 OF 1

V:\X300\Mechanical Models\X300-3C ATEX\ 81-03-0077-00GA X300-3C ATEX WITH FLANGE