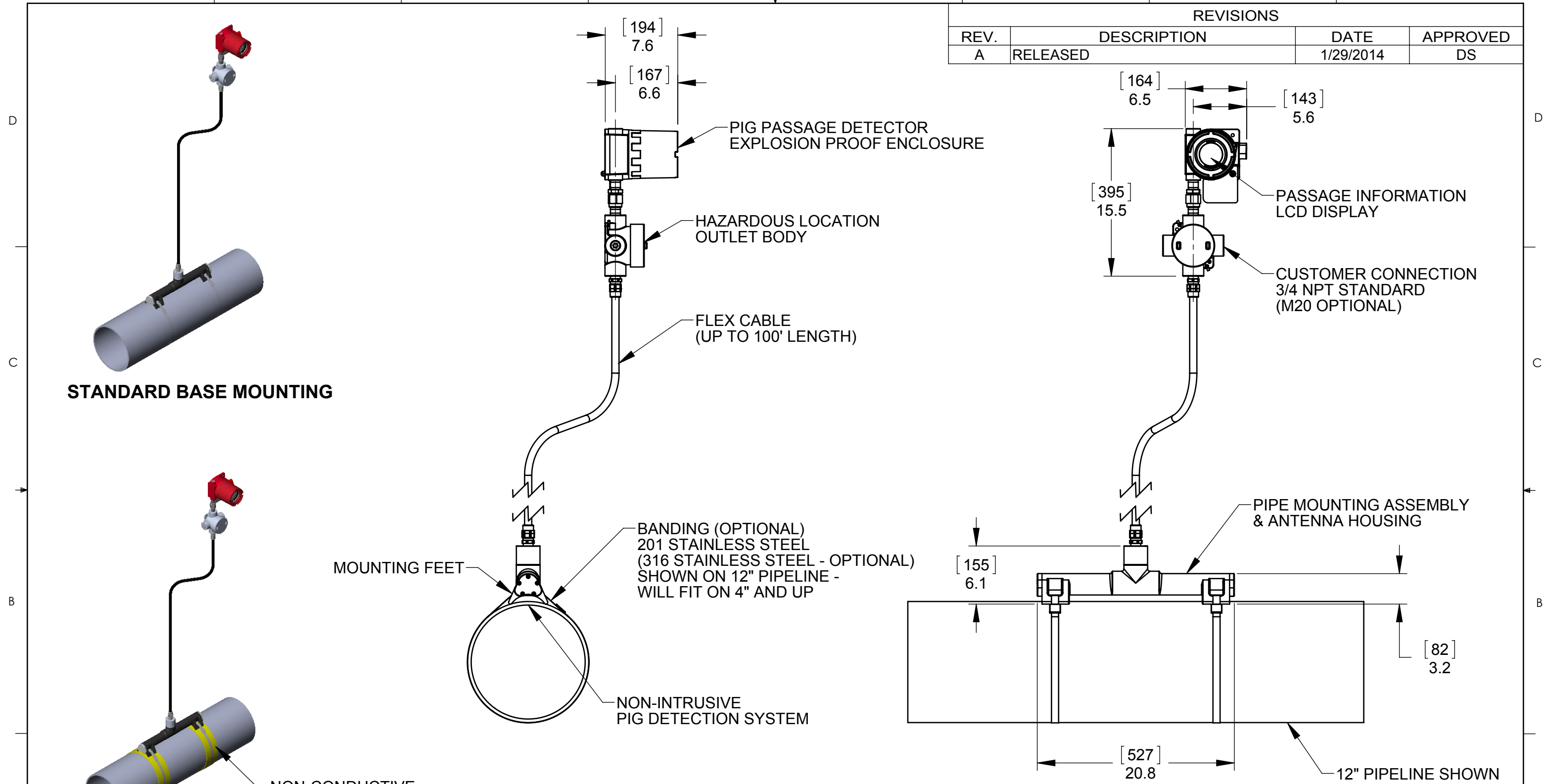



8 7 6 5 4 3 2 1

| REVISIONS | | | |
|-----------|-------------|-----------|----------|
| REV. | DESCRIPTION | DATE | APPROVED |
| A | RELEASED | 1/29/2014 | DS |



NOTES:
 1. DIMENSIONS ARE IN INCHES AND [MILLIMETERS].
 2. WEIGHT: 25 LB + .3 LB PER FOOT OF CABLE [11 KG + .43 KG PER METER OF CABLE].

PROPRIETARY AND CONFIDENTIAL
 THE INFORMATION CONTAINED IN THIS DRAWING IS THE SOLE PROPERTY OF CDI. ANY REPRODUCTION IN PART OR AS A WHOLE WITHOUT THE WRITTEN PERMISSION OF CDI IS PROHIBITED.

| | | | | |
|---|----------------------|-----------|------|---|
| UNLESS OTHERWISE SPECIFIED: | | NAME | DATE |  |
| DIMENSIONS ARE IN INCHES | | DRAWN | DS | |
| TOLERANCES: | | CHECKED | | |
| FRACTIONAL ± 1/32 | | ENG APPR. | | |
| ANGULAR: ± 2° | | MFG APPR. | | |
| TWO PLACE DECIMAL ± .03 | | Q.A. | | TITLE: GENERAL ARRANGEMENT, CD52 ATEX RATED FLEX-CABLE BANDIT |
| THREE PLACE DECIMAL ± .010 | | COMMENTS: | | SIZE DWG. NO. REV |
| INTERPRET GEOMETRIC TOLERANCING PER: ASME Y14.5M - 1994 | | | | B 81-05-0080-XX-C-XXX A |
| MATERIAL | | | | SCALE: WEIGHT: SHEET 1 OF 1 |
| NEXT ASSY | USED ON | | | |
| APPLICATION | DO NOT SCALE DRAWING | ECN #: | | |

8 7 6 5 4 3 2 1