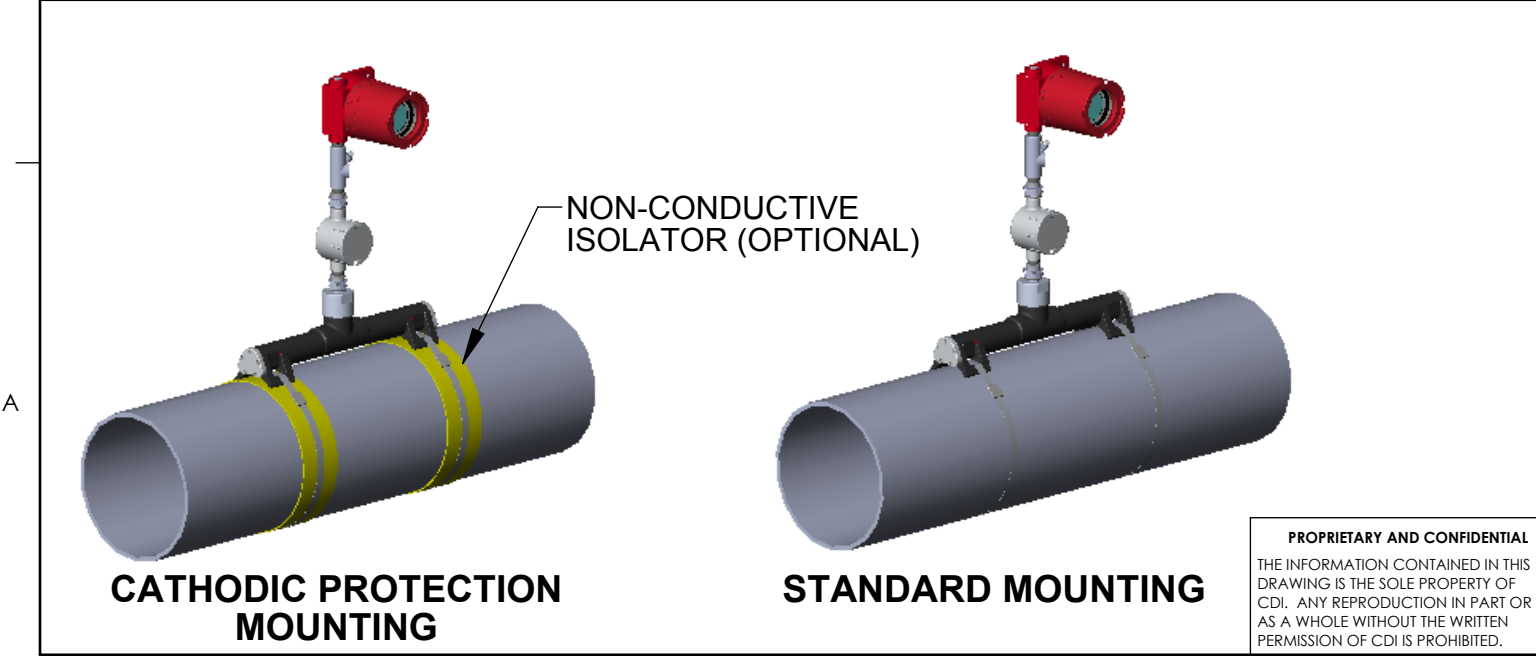
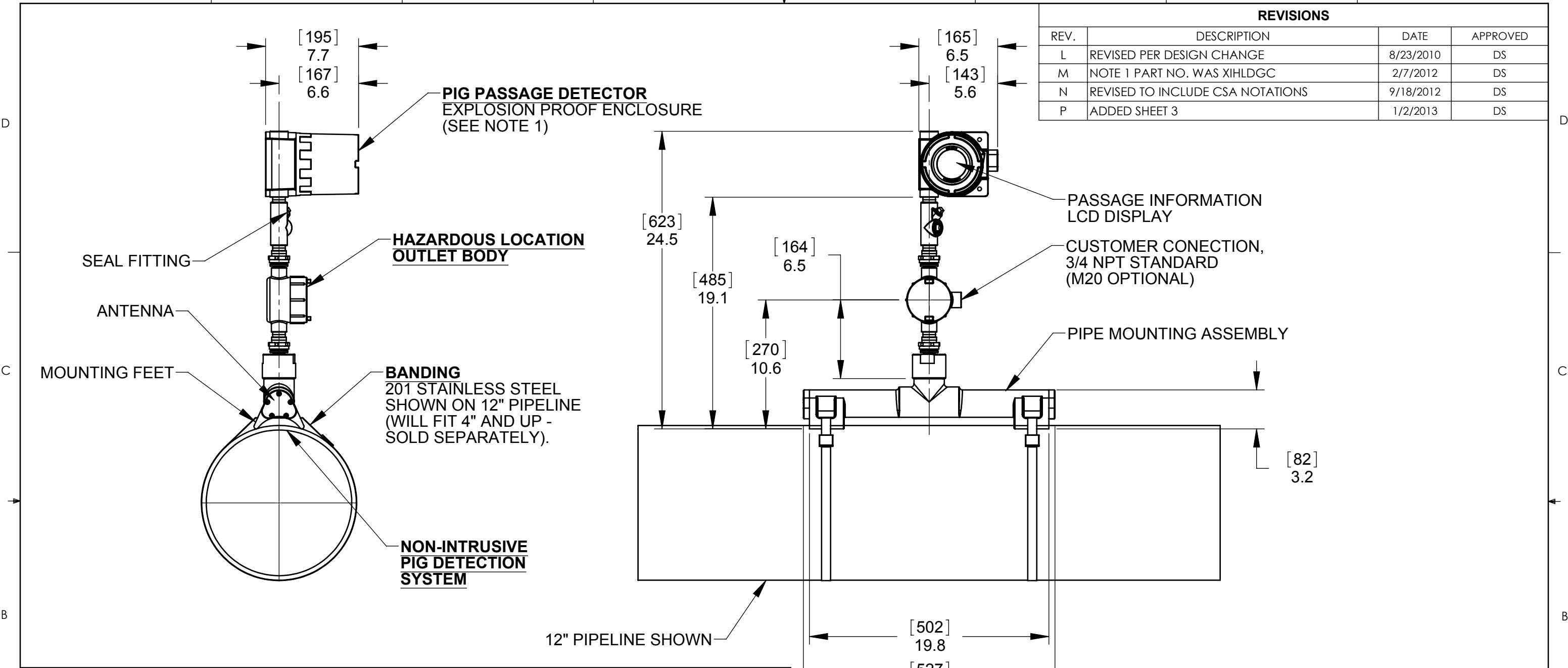


8 7 6 5 4 3 2 1

REVISIONS			
REV.	DESCRIPTION	DATE	APPROVED
L	REVISED PER DESIGN CHANGE	8/23/2010	DS
M	NOTE 1 PART NO. WAS XIHLDGC	2/7/2012	DS
N	REVISED TO INCLUDE CSA NOTATIONS	9/18/2012	DS
P	ADDED SHEET 3	1/2/2013	DS



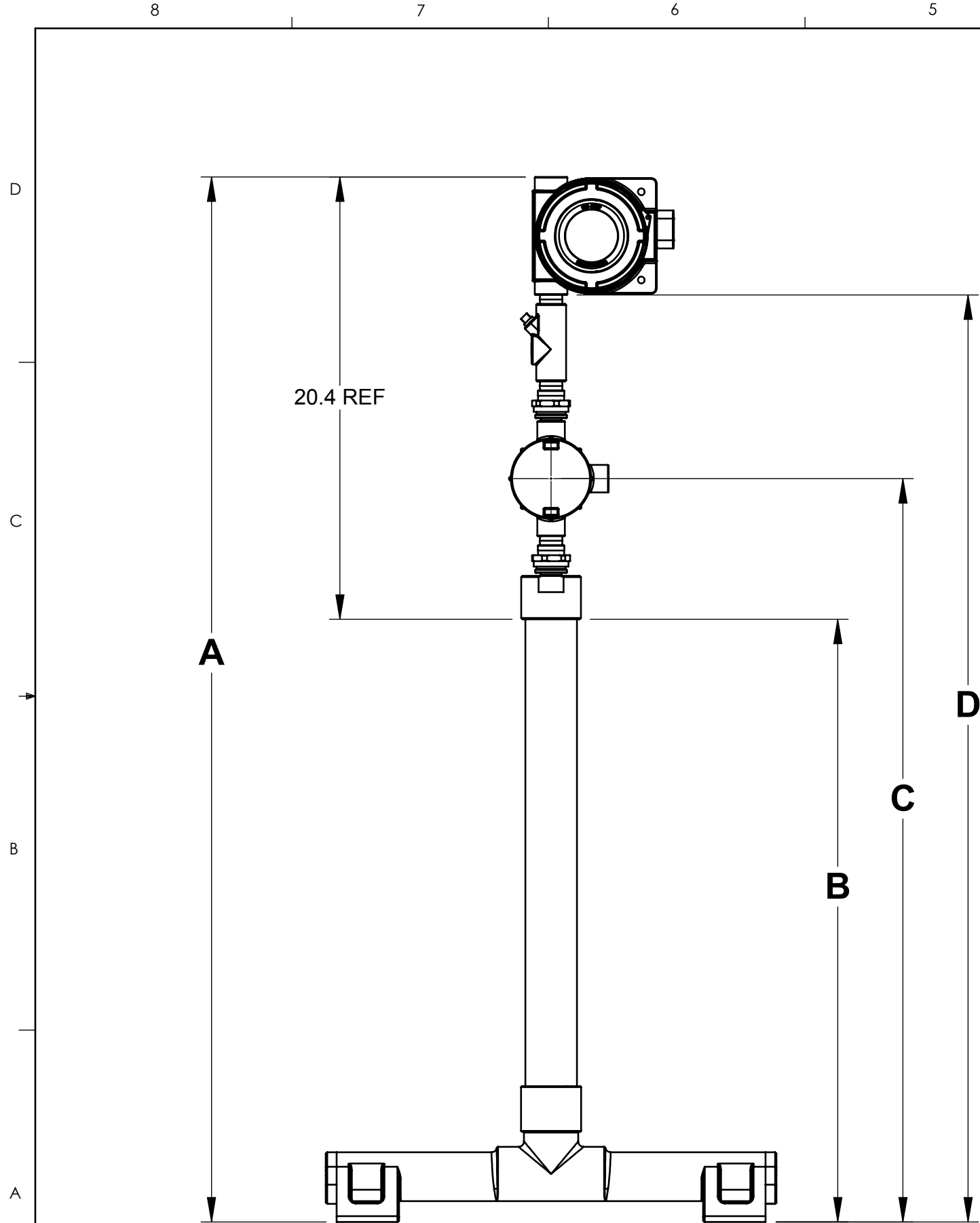
MODEL CD52-12 SHOWN

NOTES:
 1. ENCLOSURE: ADALET-PLM #XIHLDCGX
 COMPLIANCES: NEMA: 4, 7BCD, 9EFG.
 2. DIMENSIONS ARE IN INCHES AND [MILLIMETERS].
 3. HEIGHT OPTIONS ARE SHOWN ON SHEET 2.

PROPRIETARY AND CONFIDENTIAL
 THE INFORMATION CONTAINED IN THIS DRAWING IS THE SOLE PROPERTY OF CDI. ANY REPRODUCTION IN PART OR AS A WHOLE WITHOUT THE WRITTEN PERMISSION OF CDI IS PROHIBITED.

UNLESS OTHERWISE SPECIFIED:		NAME	DATE		
DIMENSIONS ARE IN INCHES TOLERANCES: FRACTIONAL ± 1/32 ANGULAR: ± 2° TWO PLACE DECIMAL ± .03 THREE PLACE DECIMAL ± .010		DRAWN	DS		8/23/2010
INTERPRET GEOMETRIC TOLERANCING PER: ASME Y14.5M - 1994		CHECKED			
MATERIAL		ENG APPR.			
FINISH		MFG APPR.			
NEXT ASSY		USED ON			
APPLICATION		DO NOT SCALE DRAWING		TITLE: GENERAL ARRANGEMENT, CD52 CSA STANDARD UNIT	
ECN #:		SIZE	DWG. NO.	REV	
		B	81-05-0025-E	P	
		SCALE:	WEIGHT:	SHEET 1 OF 3	

8 7 6 5 4 3 2 1



MODEL	'A' DIM	'B' DIM	'C' DIM	'D' DIM	MODEL WEIGHT
CD52-12	24.5 [648 mm]	4.1 [104 mm]	10.6 [269 mm]	19.0 [483 mm]	25 lbs [11.3 kg]
CD52-36	36 [914 mm]	15.7 [399 mm]	22.2 [564 mm]	30.7 [780 mm]	30 lbs [13.7 kg]
CD52-48	48 [1219 mm]	27.7 [704 mm]	34.2 [869 mm]	42.7 [1085 mm]	33 lbs [15.1 kg]
CD52-60	60 [1524 mm]	39.7 [1008 mm]	46.2 [1173 mm]	54.7 [1389 mm]	37 lbs [16.6 kg]
CD52-72	72 [1829 mm]	51.7 [1313 mm]	58.2 [1478 mm]	66.7 [1694 mm]	40 lbs [18.0 kg]
CD52-84	84 [2134 mm]	63.7 [1618 mm]	70.2 [1783 mm]	78.7 [1999 mm]	43 lbs [19.4 kg]
CD52-96	96 [2438 mm]	75.7 [1923 mm]	82.2 [2088 mm]	90.7 [2304 mm]	46 lbs [20.9 kg]
CD52-108	108 [2743 mm]	87.7 [2228 mm]	94.2 [2393 mm]	102.7 [2609 mm]	49 lbs [22.3 kg]
CD52-120	120 [3048 mm]	99.7 [2532 mm]	106.2 [2697 mm]	114.7 [2913 mm]	52 lbs [23.7 kg]
CD52-132	132 [3353 mm]	111.7 [2837 mm]	118.2 [3002 mm]	126.7 [3218 mm]	55 lbs [25.2 kg]
CD52-144	144 [3658 mm]	123.7 [3142 mm]	130.2 [3307 mm]	138.7 [3523 mm]	59 lbs [26.6 kg]
CD52-156	156 [3962 mm]	135.7 [3447 mm]	142.2 [3612 mm]	150.7 [3828 mm]	62 lbs [28.0 kg]
CD52-168	168 [4267 mm]	147.7 [3752 mm]	154.2 [3917 mm]	162.7 [4132 mm]	65 lbs [29.4 kg]
CD52-180	180 [4572 mm]	159.7 [4056 mm]	166.2 [4221 mm]	174.7 [4437 mm]	68 lbs [30.9 kg]

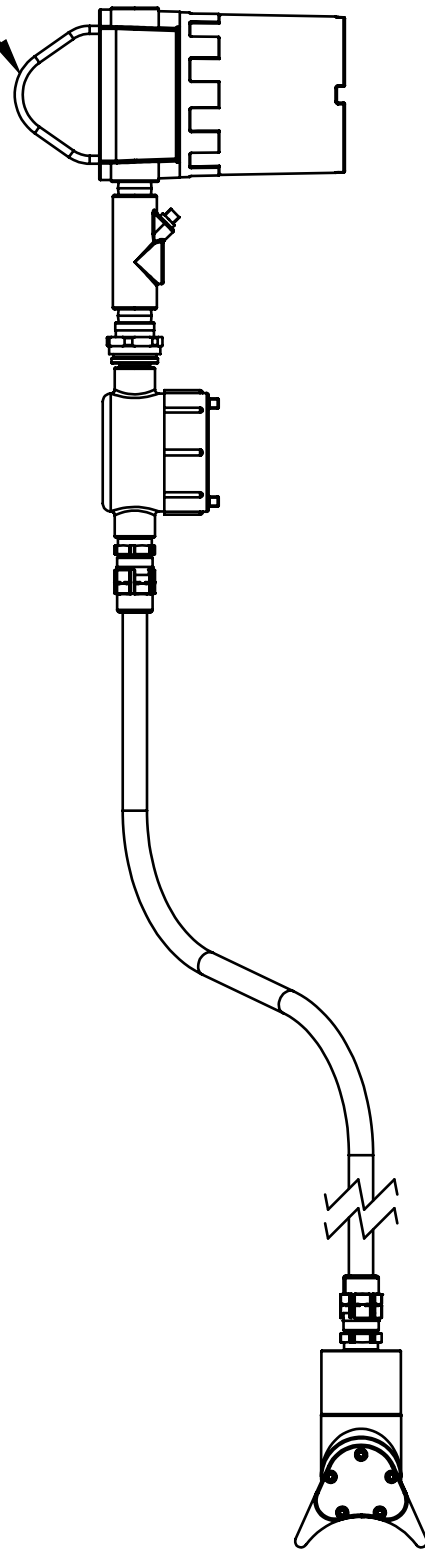
**CD52 CSA STANDARD
UNIT HEIGHT OPTIONS**



TITLE: GENERAL ARRANGEMENT, CD52 CSA STANDARD UNIT		
SIZE B	DWG. NO. 81-05-0025-E	REV P
SCALE:	WEIGHT:	SHEET 2 OF 3

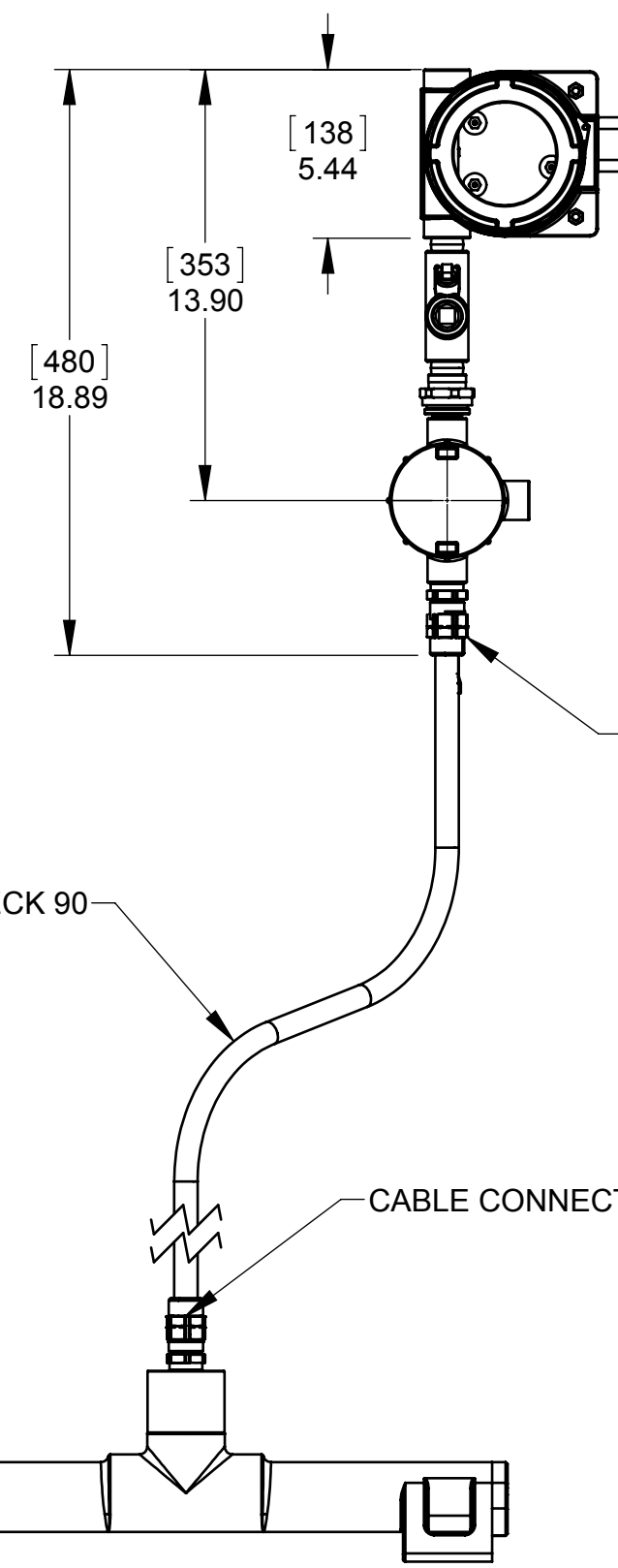
OPTIONAL BAR STRAP CAN BE USED FOR MOUNTING ON 2" PIPE

D
C
B
A



SIDE VIEW

ARMoured CABLE, TEXCAN TECK 90



FRONT VIEW

CABLE CONNECTOR, TMC2X HAZARDOUS AREA

CABLE CONNECTOR, TMC2X HAZARDOUS AREA

CD52-XX-FLEX

where XX is the cable length in feet up to 100 ft [30m]

CD52 CSA FLEXIBLE CABLE MODEL



TITLE:
**GENERAL ARRANGEMENT,
CD52 CSA STANDARD UNIT**

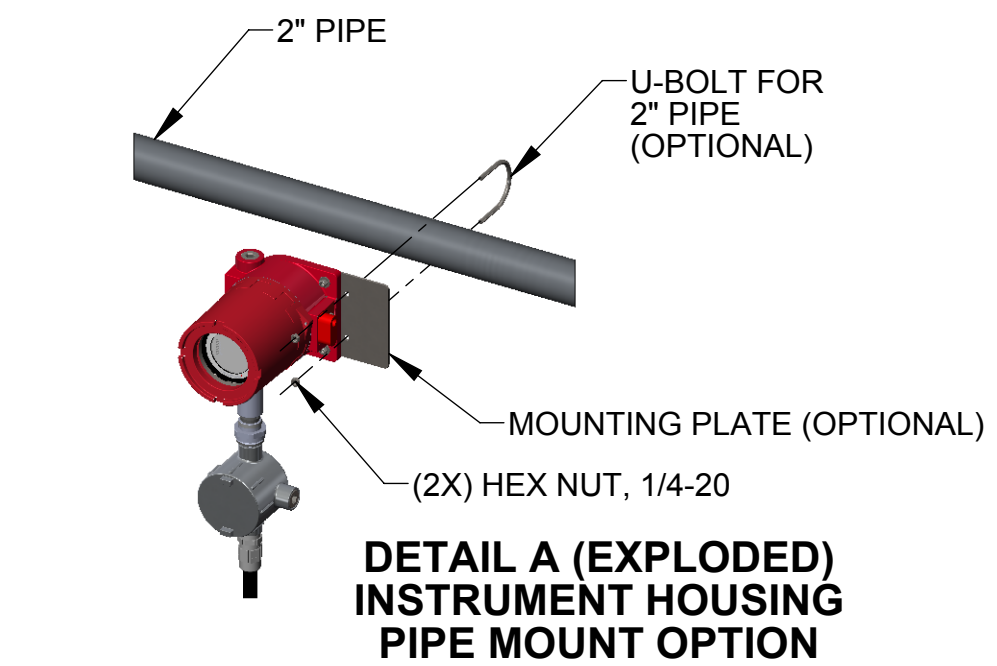
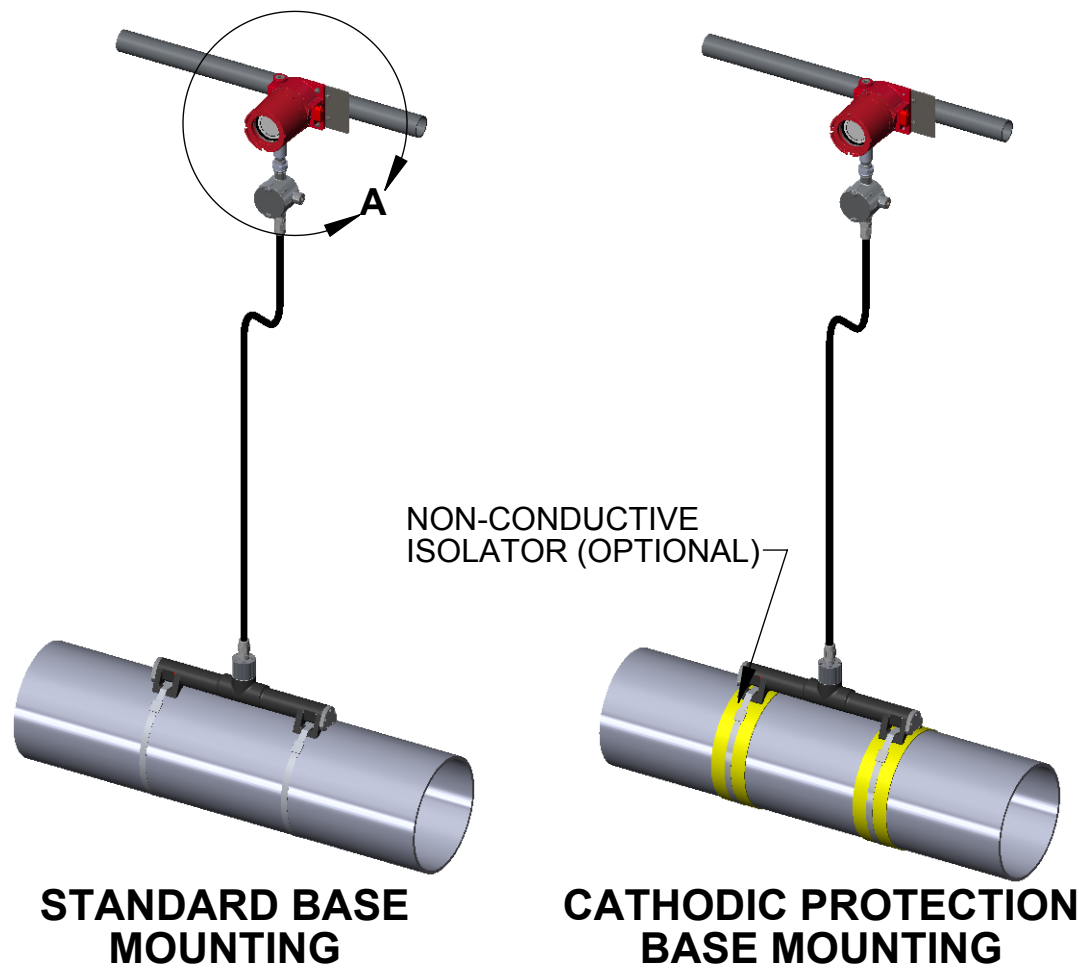
SIZE	DWG. NO.	REV
B	81-05-0025-E	P

SCALE: 1:16 | WEIGHT: | SHEET 3 OF 3

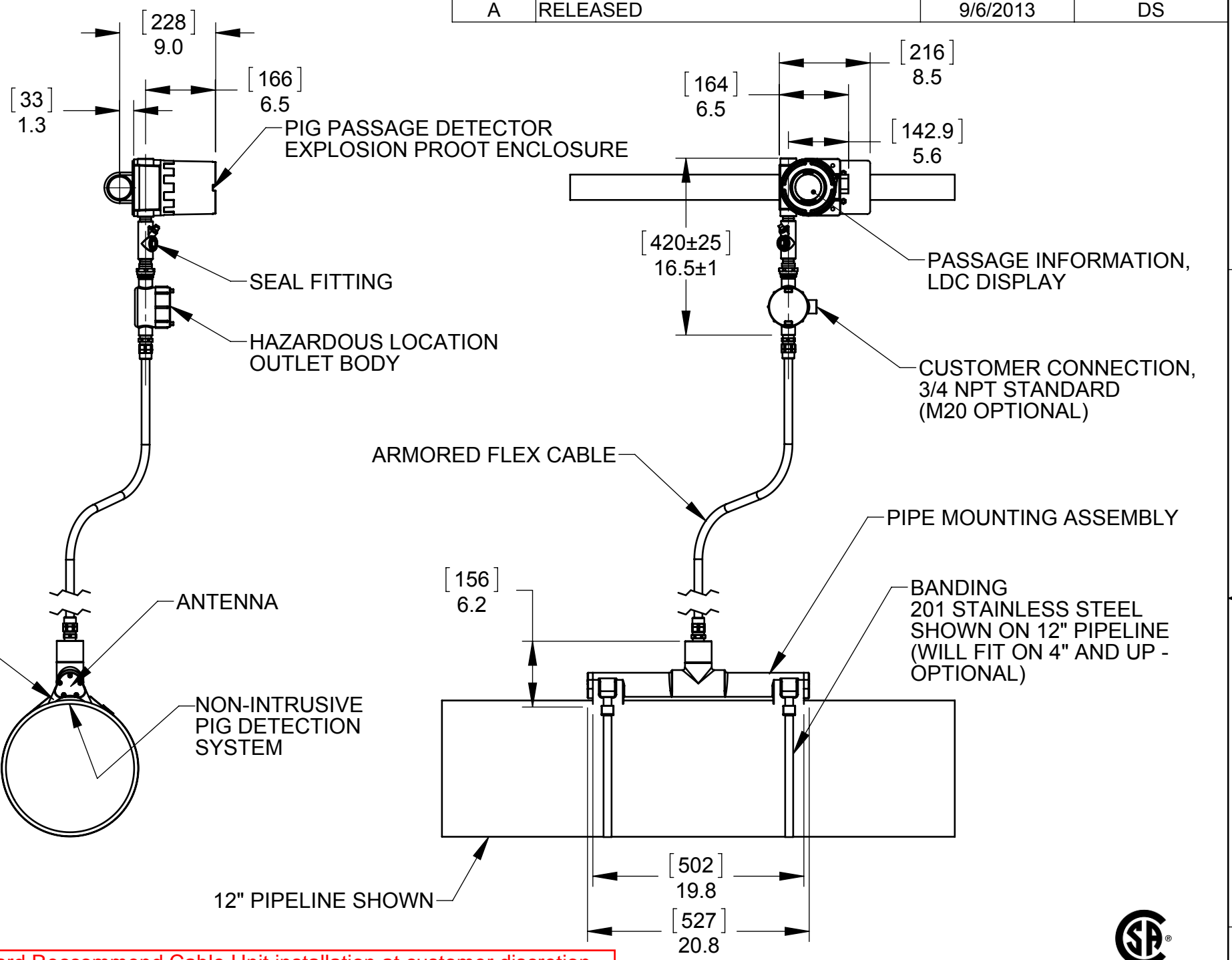
8 7 6 5 4 3 2 1

8 7 6 5 4 3 2 1

REVISIONS			
REV.	DESCRIPTION	DATE	APPROVED
A	RELEASED	9/6/2013	DS



**DETAIL A (EXPLODED)
INSTRUMENT HOUSING
PIPE MOUNT OPTION**



Standard Reccommend Cable Unit installation at customer discretion.



NOTES:
 1. DIMENSIONS ARE IN INCHES AND [MILLIMETERS].
 2. OPTIONS: 30 FOOT CABLE WITH HEATER AND 24VDC.
 3. WEIGHT: 55 LBS [25 KG].

PROPRIETARY AND CONFIDENTIAL
 THE INFORMATION CONTAINED IN THIS DRAWING IS THE SOLE PROPERTY OF CDI. ANY REPRODUCTION IN PART OR AS A WHOLE WITHOUT THE WRITTEN PERMISSION OF CDI IS PROHIBITED.

UNLESS OTHERWISE SPECIFIED:		NAME	DATE
DIMENSIONS ARE IN INCHES		DRAWN	DS
TOLERANCES:		CHECKED	
FRACTIONAL ± 1/32		ENG APPR.	
ANGULAR: ± 2°		MFG APPR.	
TWO PLACE DECIMAL ± .03		Q.A.	
THREE PLACE DECIMAL ± .010		COMMENTS:	
INTERPRET GEOMETRIC TOLERANCING PER: ASME Y14.5M - 1994			
MATERIAL			
FINISH			
NEXT ASSY	USED ON		
APPLICATION	DO NOT SCALE DRAWING	ECN #:	

TITLE: CD52 BANDIT, CSA CERTIFIED WITH 30' CABLE, HEATER & 24VDC

SIZE	DWG. NO.	REV
B	81-05-0025-AH-C-030	A

SCALE: WEIGHT: SHEET 1 OF 1

U:\Models\CD52 Bandit\CSA & UL Version\CSA Related Drawings\Flex Cable\ TDW-81-05-0025-AH-C-030